



ANNUAL

CONFERENCE & EXPO 2017

Simulating Airport Terminals: Implementations Around the Globe

Aarshabh Misra, P. Eng., *Senior Airport Analyst, Arup*
Daley Mikalson, P. Eng., *Senior Airport Analyst, Arup*

Introduction

Growth in Aviation

Space Programming

Terminal Simulation

Policy Implications

Simulation Inputs and Case Studies

Terminal Layout

Demand

Show-Up Profile

Passenger Type

Process

Check-In

Security

Passport Control

Baggage Claim

Integrated Simulation Modelling



Introduction





Passenger Satisfaction =
(Experience – Expectation)

Technology

Regulatory Environment

Airline and Industry Strategy

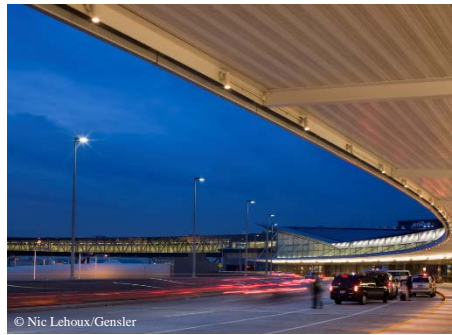
Infrastructure



© Kohn Pedersen Fox Associates



© Zaha Hadid Architects



© Nic Lehoux/Gensler



© CECI / RSHP / Arup / FCA JV



© Aéroports de Montreal



© JGA



© GTAA



© Arup

Top: Abu Dhabi Midfield Terminal
Bottom: Montreal Airport

Top: New Beijing Airport
Bottom: New Istanbul International Airport

Top: JFK T5
Bottom: Toronto Pearson International Airport

Top: Taoyuan Airport T3 Taiwan
Bottom: Hong Kong International Airport

A word cloud of airport-related terms in shades of blue, arranged in a roughly circular shape. The most prominent words are 'departures', 'check-in', 'checkpoint', 'immigration', 'emigration', 'arrivals', and 'security'. Other visible words include 'baggage', 'connections', 'curb', 'landside', 'office', 'carousels', 'gate', 'retail', 'lounge', 'storage', 'maintenance', 'duty-free', 'groundside', 'flight', 'secondary', 'food-court', 'transfer', 'holdroom', 'airline', 'ground-service', and 'terminal'.

connections curb
check-in landside
departures office
gate retail checkpoint carousels
lounge storage immigration food-court
maintenance duty-free emigration transfer
groundside arrivals holdroom
flight security ground-service
secondary terminal
baggage

Space Programming



Aspects of Terminal Simulation

Passenger Processing



Check-In



Security



Passport Control



Baggage



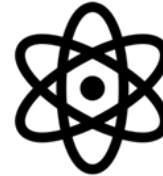
Congestion Modelling



Vertical
Circulation



GTC
Integration



Concessions
Planning



Policy Implications

Stakeholders

Federal agencies / airports / airlines

Optimal design amidst competing priorities

Level of Service

What it means to different people?

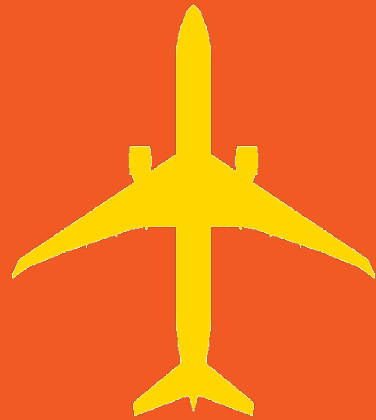
Operator / Driver

Airport or the Airline, P3

Short Term / Long Range

Operational improvements or step change in infrastructure

Simulation Inputs and Case Studies



Demand

Type

Passenger

Bags

Aircraft

Key drivers

Planning Day

Flight Schedule

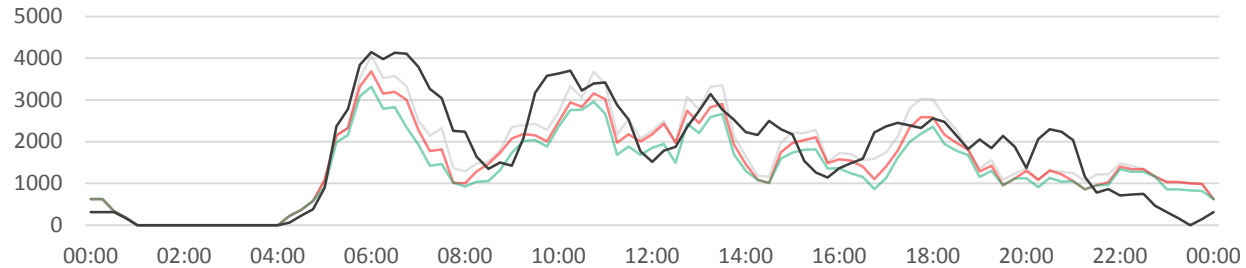
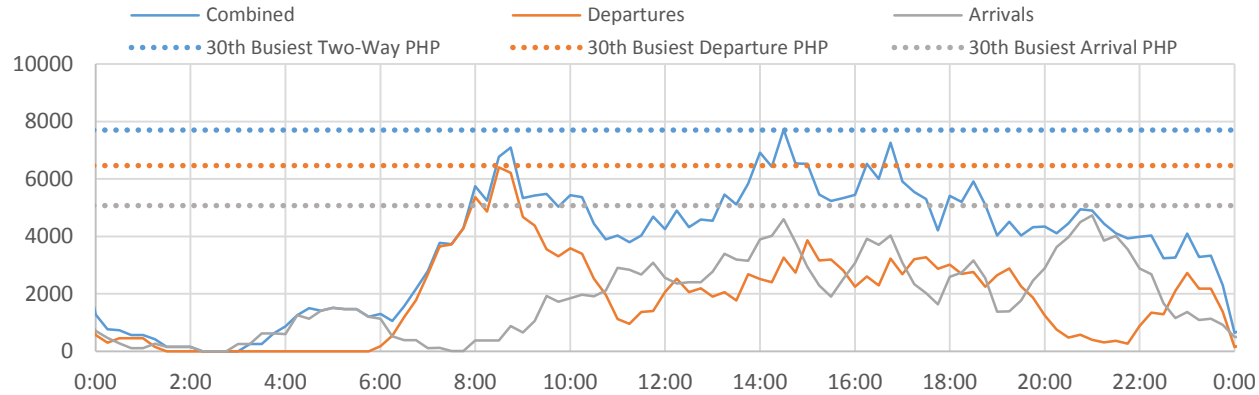
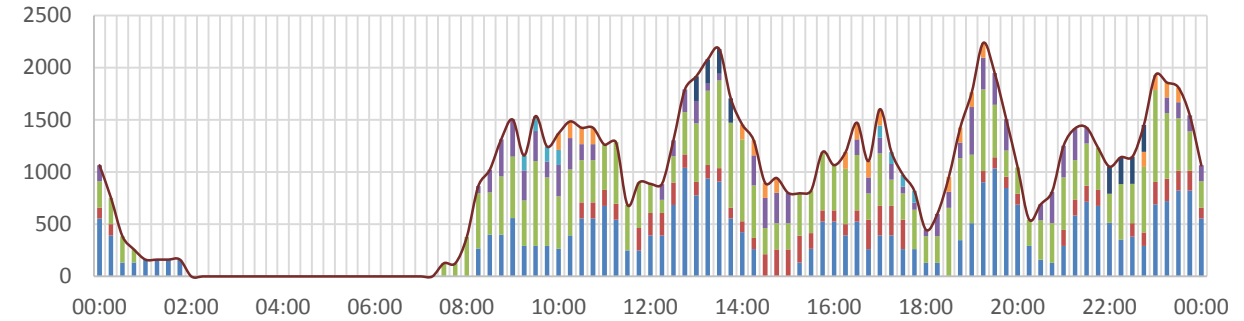
Peak Hour

Peak Spreading

Terminal Capacity

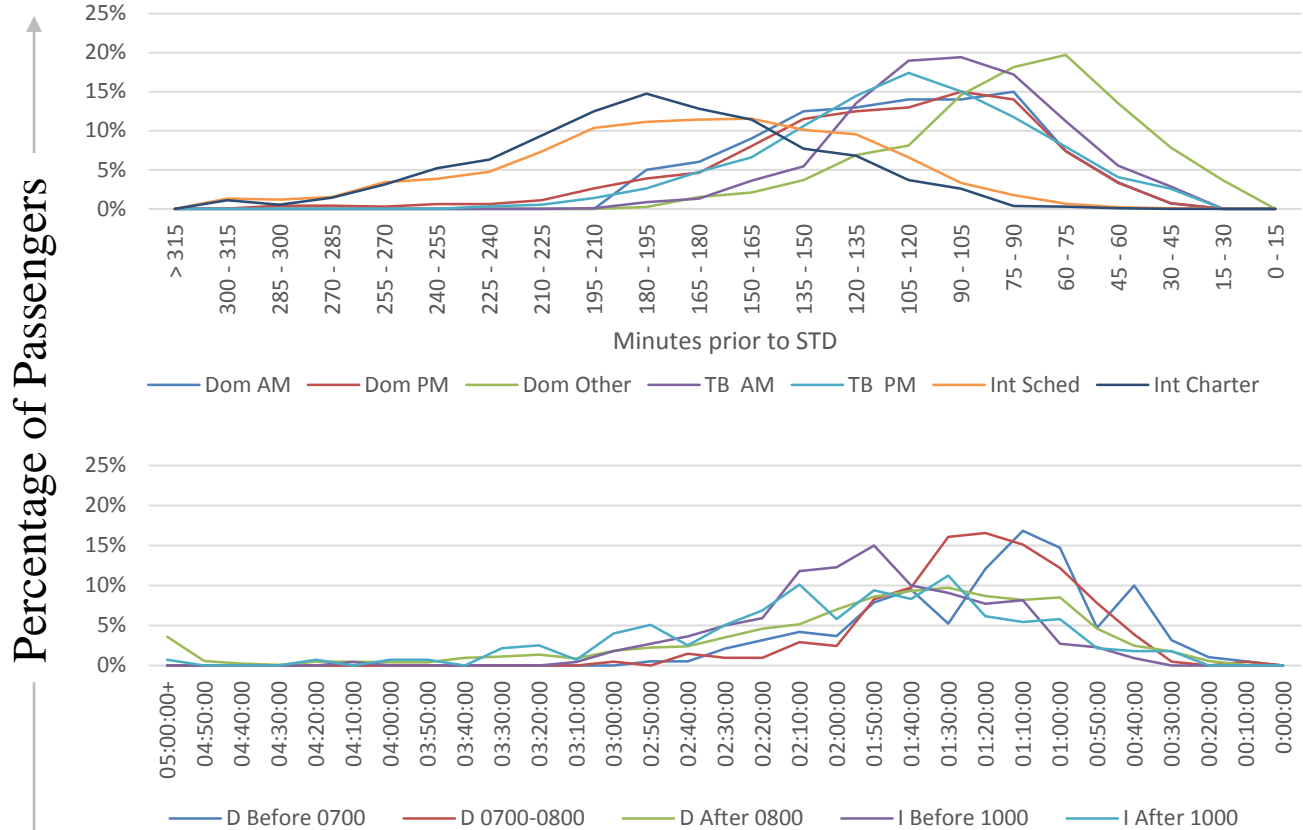
Runway Capacity

Passengers



Show-Up Profile

Key drivers
 Passenger Type
 Time of Day
 Sector



Passenger Type

Travel Type

Arrival
Departure
Transfer

Ticket

Premium
Economy

Check-In Method

Web
Kiosk
Full Service
Curbside

Frequent Flyer

Lounge Access
Regular

Bags

No Checked Bags
Checked Bags

Passport

Domestic
International
US Pre-cleared

Other Programs

Nexus
TSA PreCheck
Regular

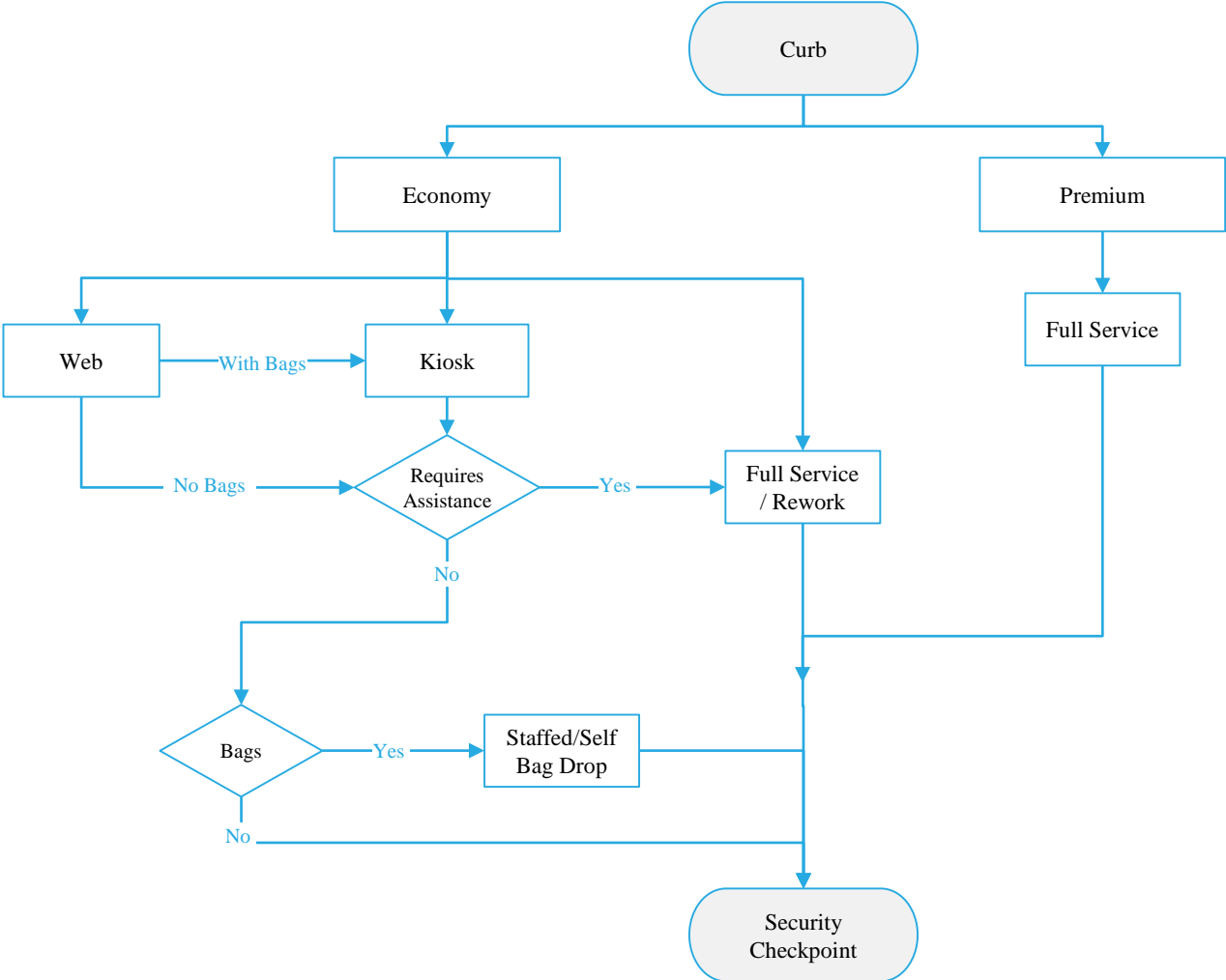
Other

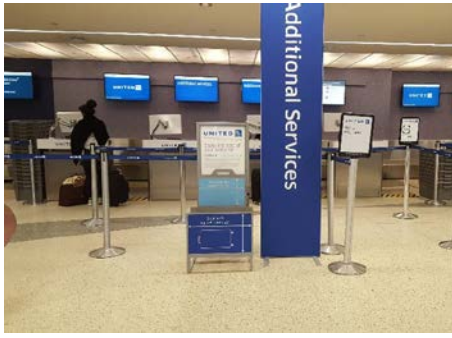
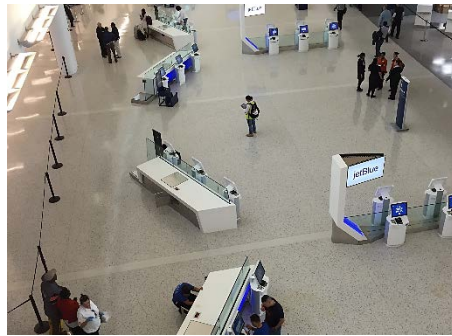
Aircraft Crew
Airport Employees
Staff

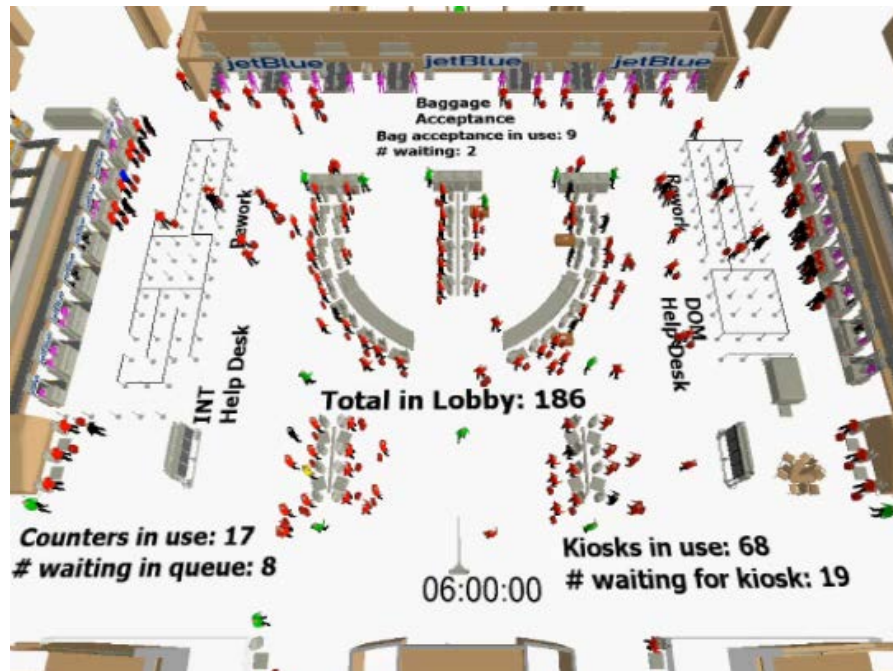
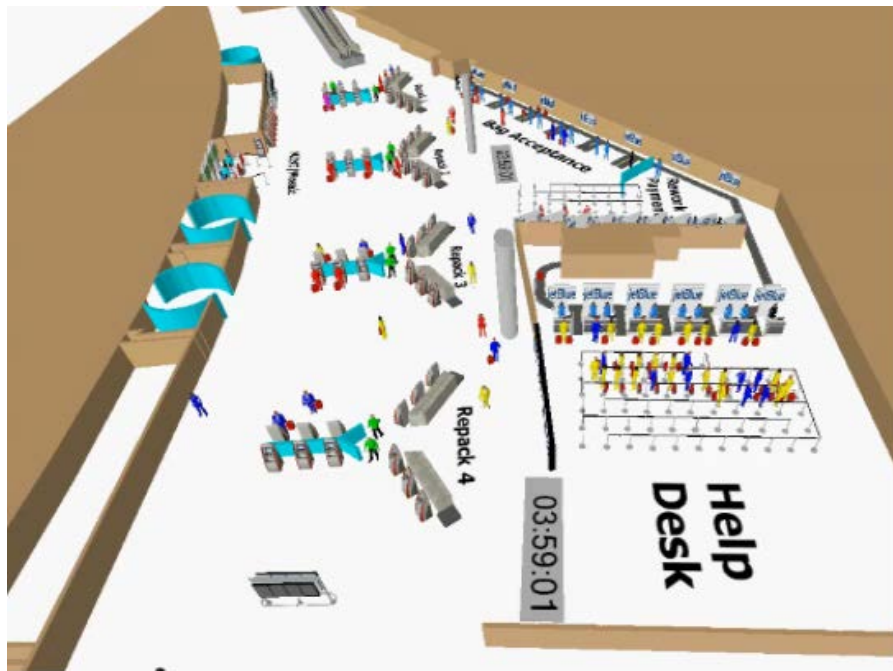


Check-In

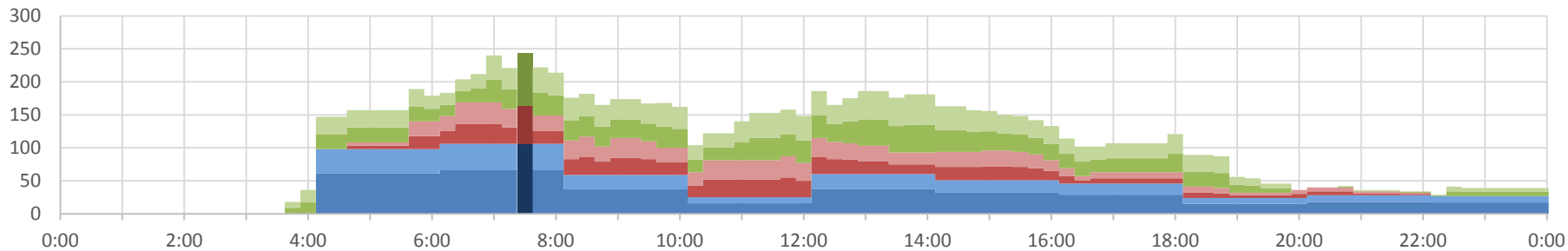
Process
Airline Specific
Conventional vs Self-Serve







Check-in Hall Counter Requirements



Security

Types

Conventional Lanes

Automated Screening Lanes (ASL)

Matrix Screening

Scan

Magnetometer

Full Body-scanner (Advanced Imaging Technology)

Key Drivers

Regulation

Multiple divestiture

Lane length

Random searches

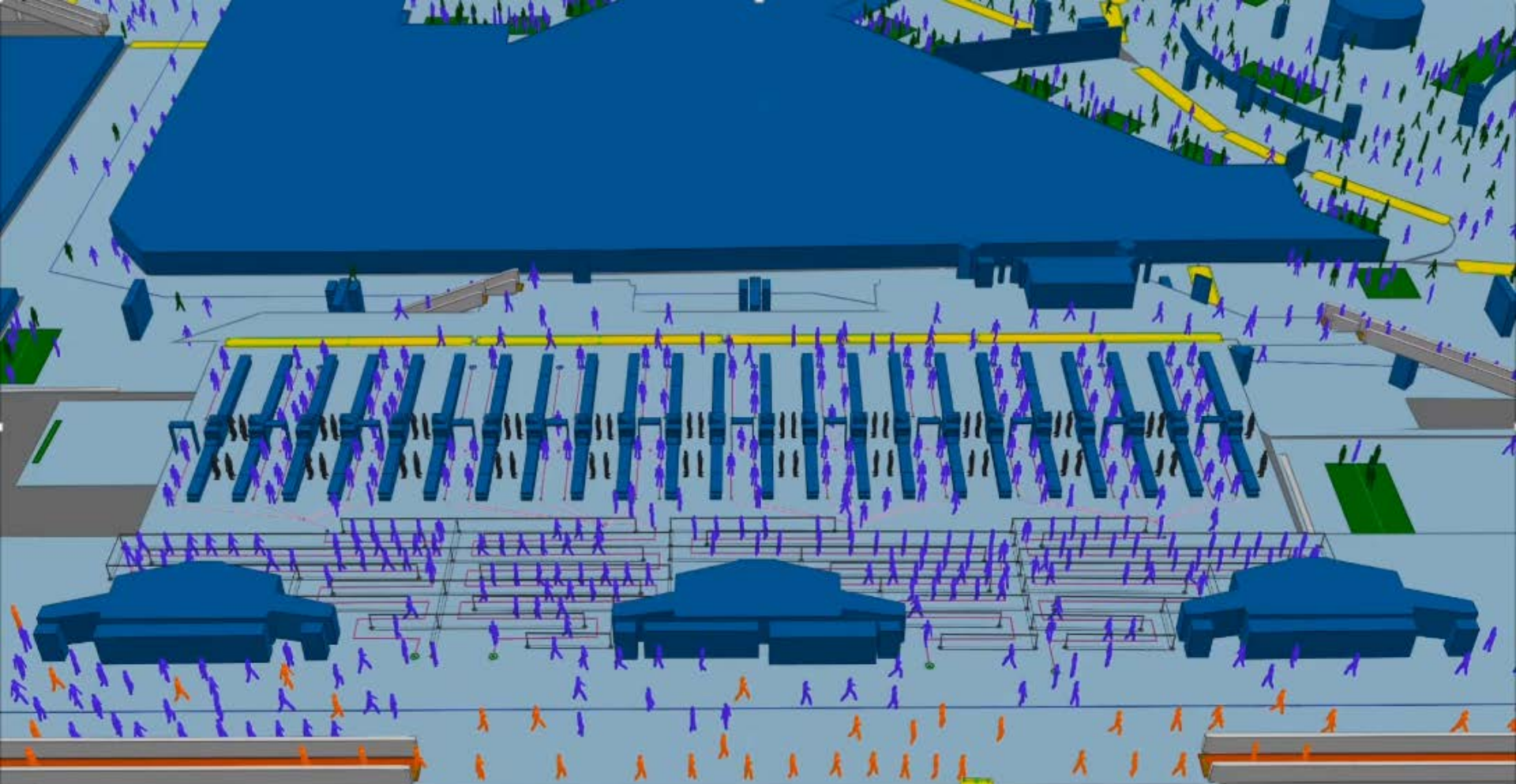
Recompose

Tray Usage

Staff Provision

Trusted Traveler Programs





Passport Control

Types

Immigration

Emigration

Key Drivers

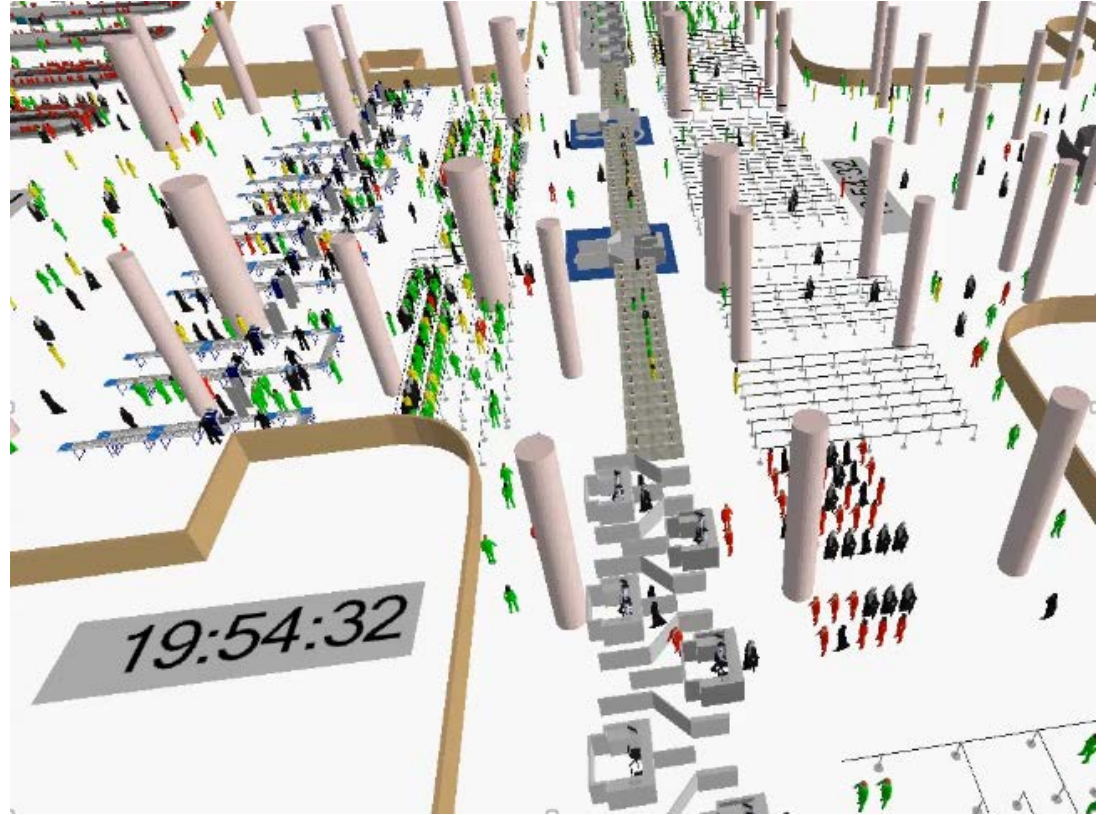
Regulation

Staffing

Mini Queues

Self Serve

Bussing Operations



Baggage Claim

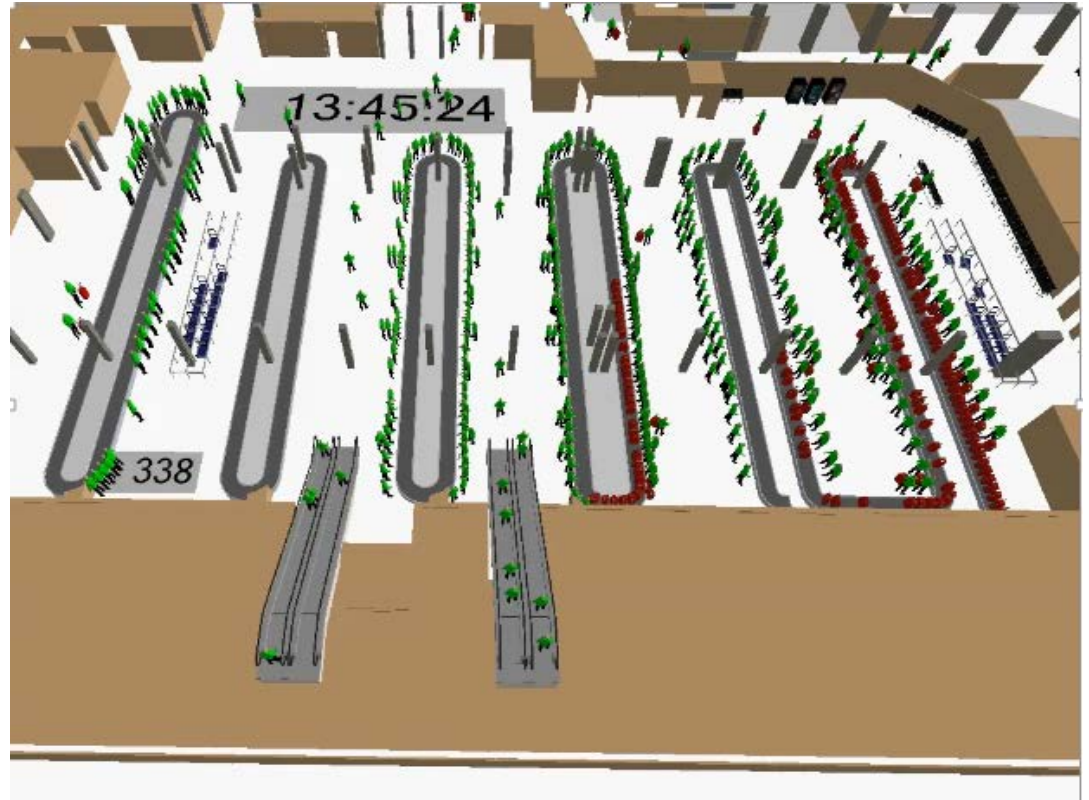
Key Drivers

First Bag

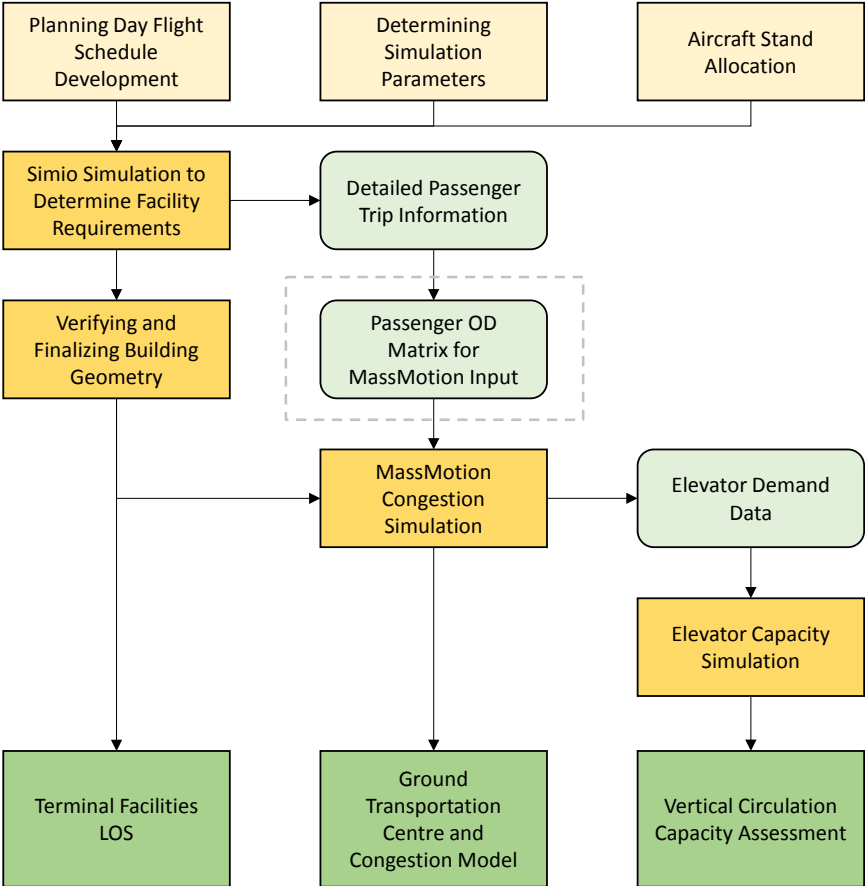
Bags per passenger

Group Size

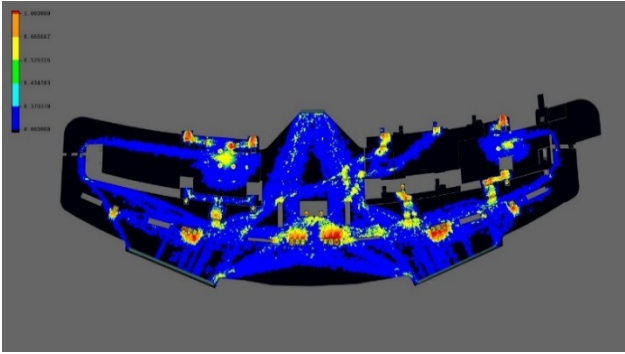
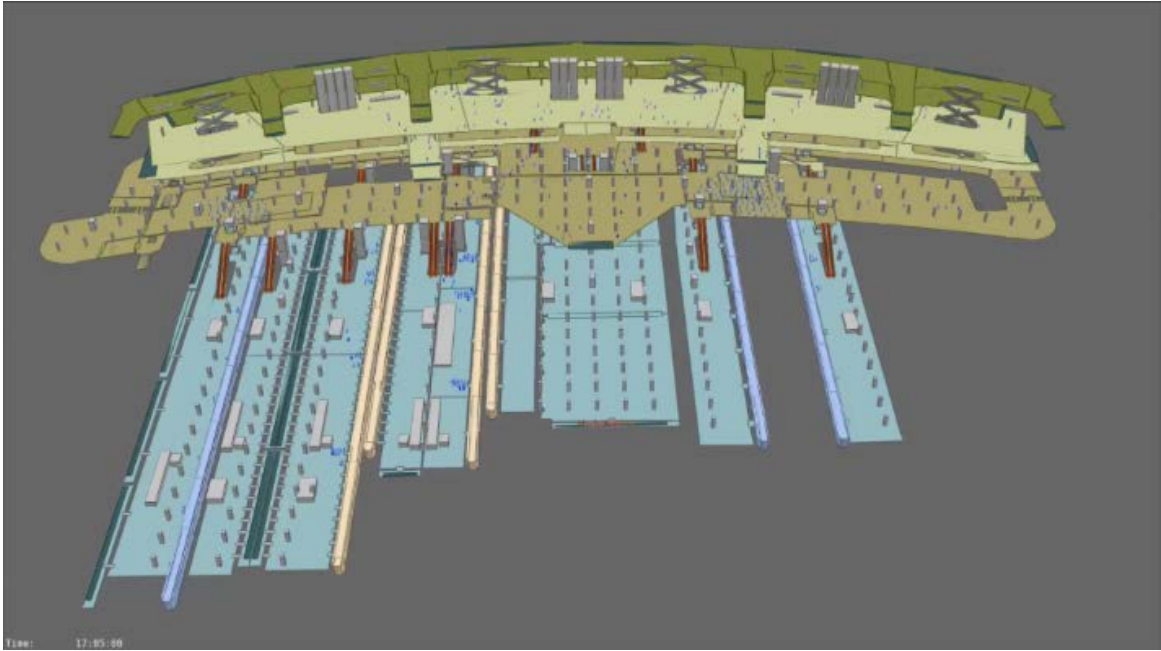
Wide-body Aircraft Arrivals



Integrated Simulation Framework

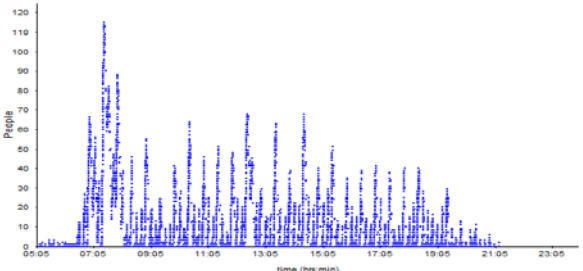


Integrated Simulation Framework

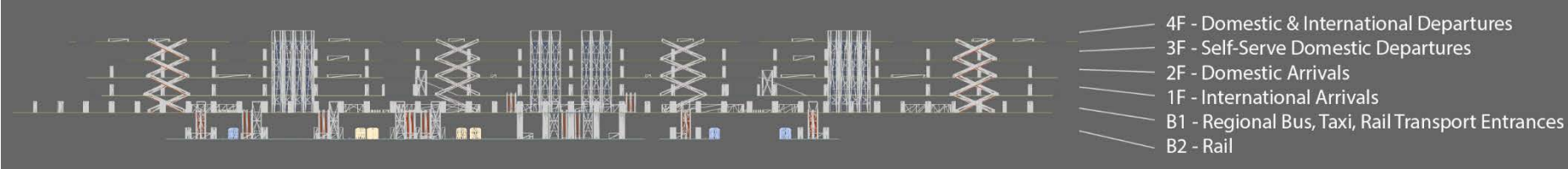


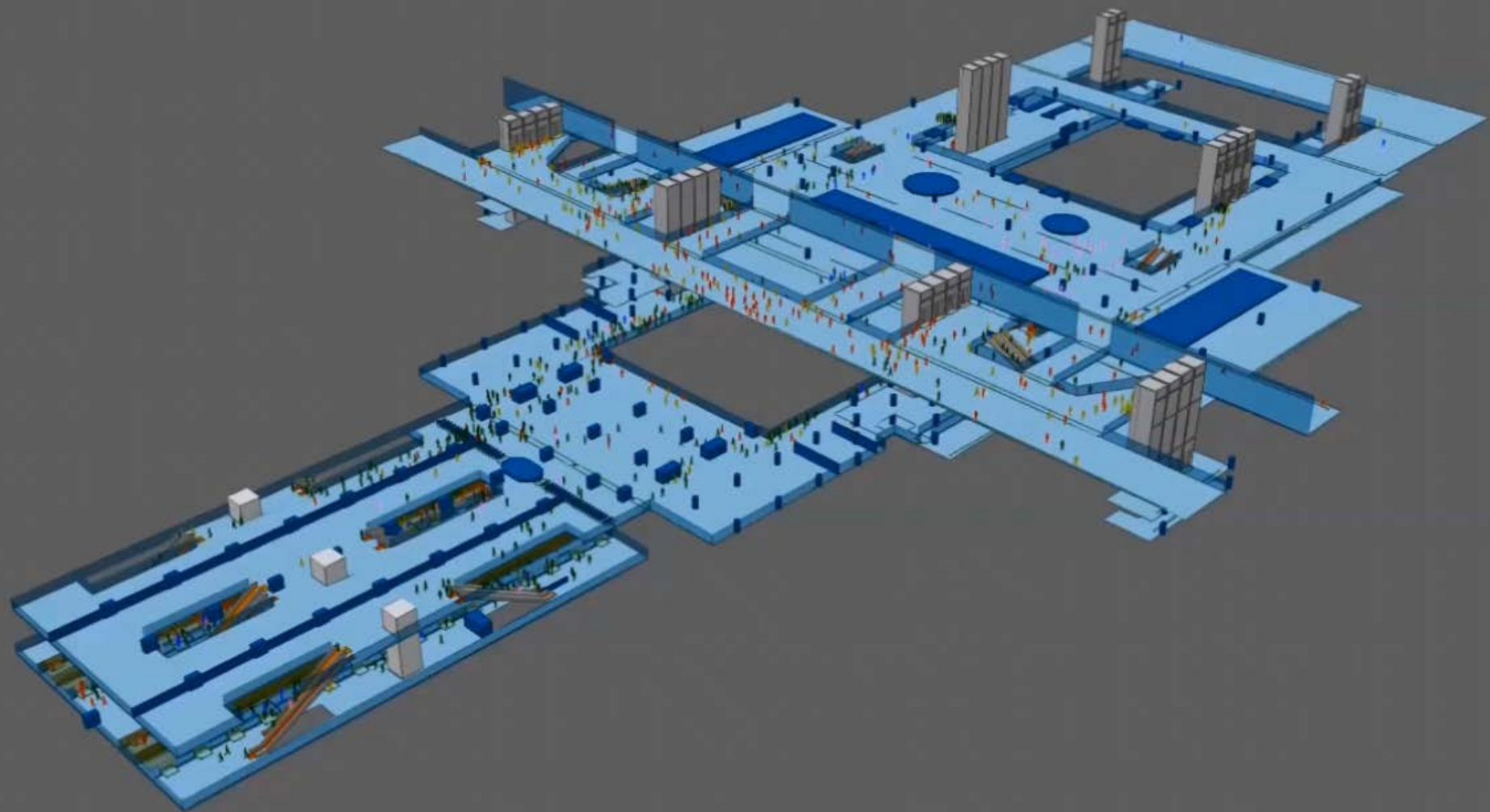
2 No. 1000 kg elevators @ 1.00 m/s
Average of all runs

Queue Lengths
B1



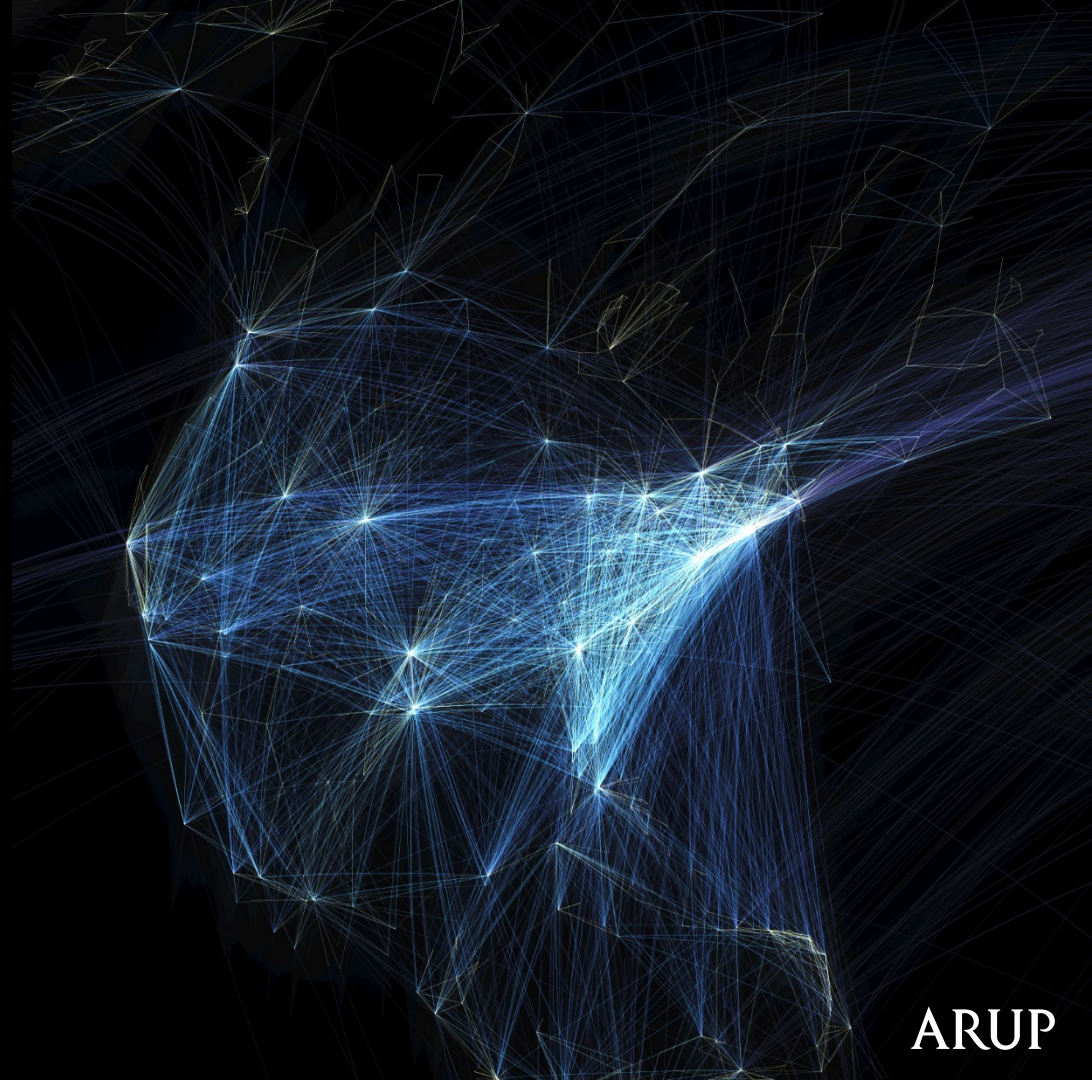
No average of Queue Length so results for all runs plotted together





Thank you

Aarshabh.Misra@arup.com
Daley.Mikalson@arup.com



ARUP